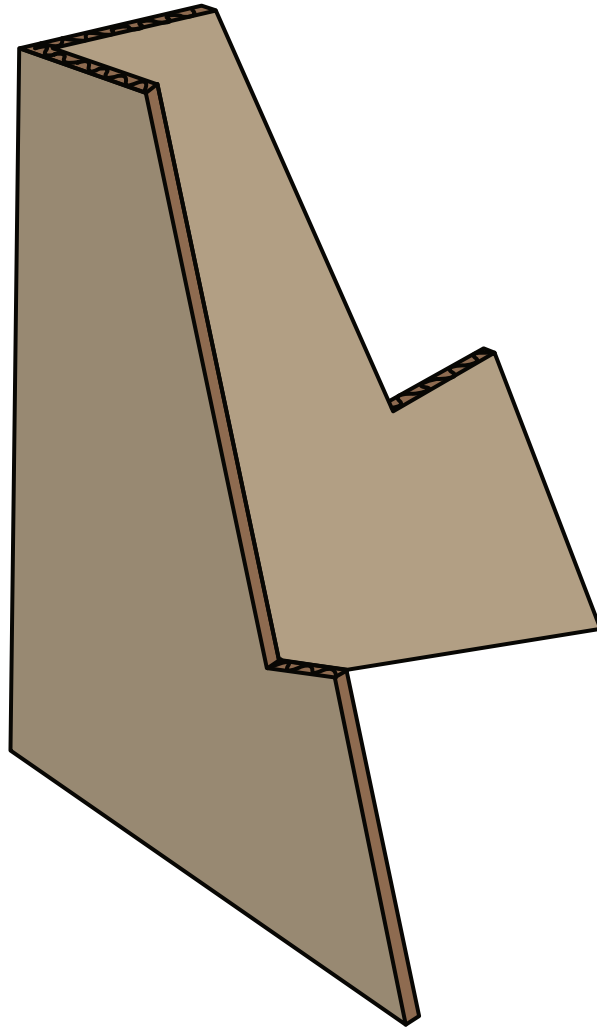


How to make an **Easel**



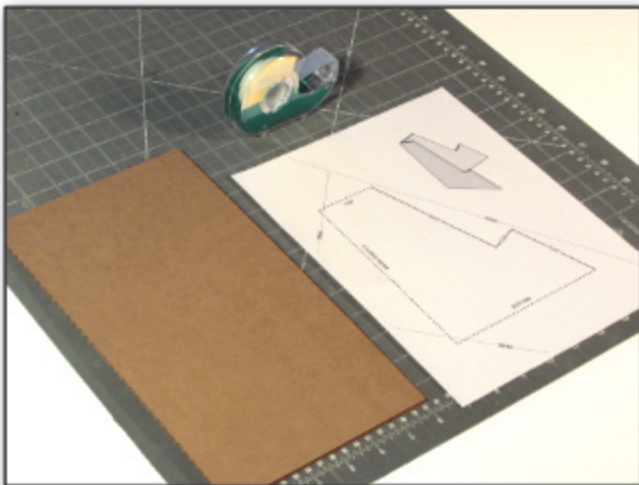
**To display your Spindle and
Connection Cards**

SAFETY FIRST

This is a project for adults or students with adult supervision.

Follow all safety precautions and recommendations of the tool manufacturers including, but not limited to, safety glasses with side shields, gloves, and/or leather aprons. The improper use of the tools required may result in injury. You assume all risks, TreeTops Publishing is not liable for any injury that might incur.

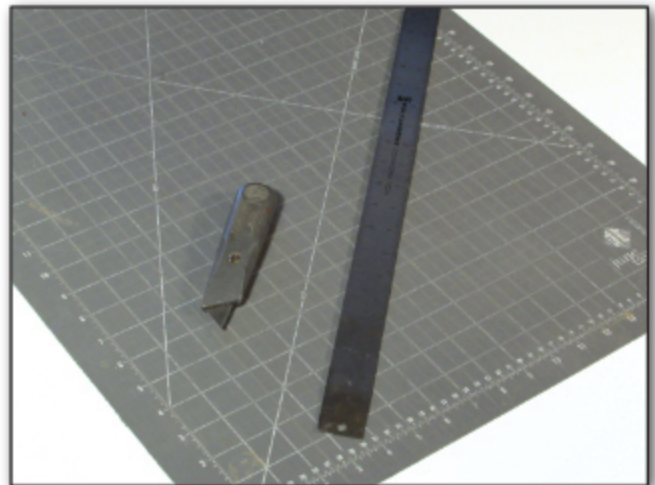
Easel Materials & Tools



**6 1/2" x 12" plain Corrugated
Cardboard, flutes going the 6 1/2"
direction**

Printed Template

Tape

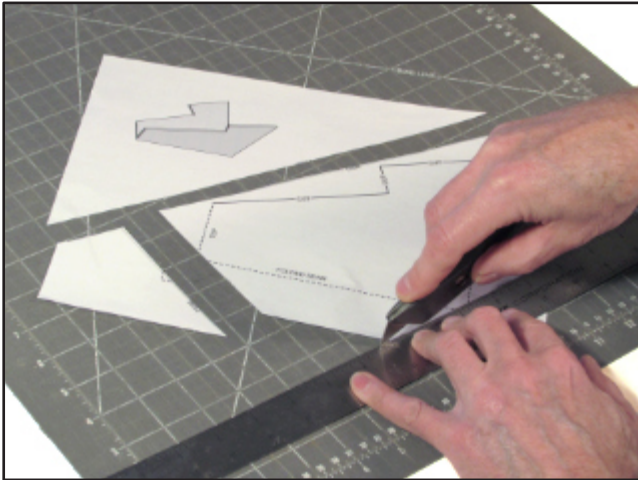
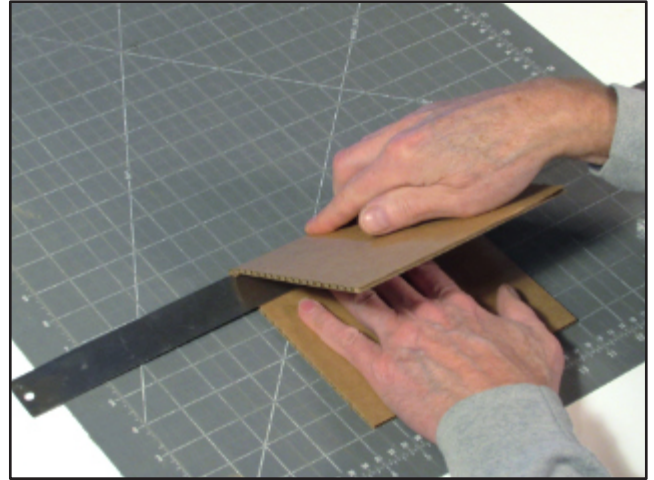


Utility Knife

Cutting Mat

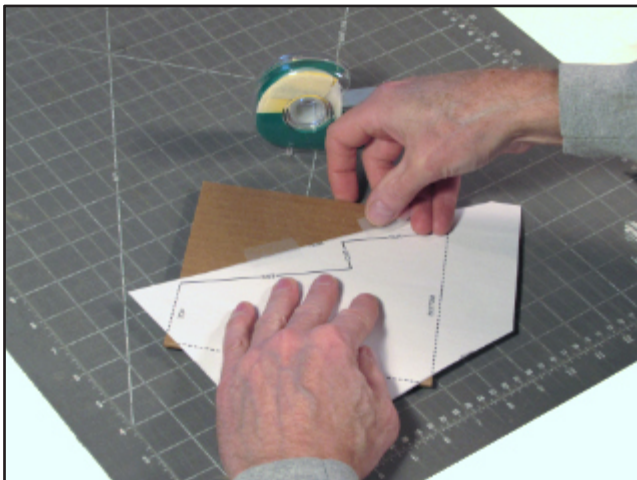
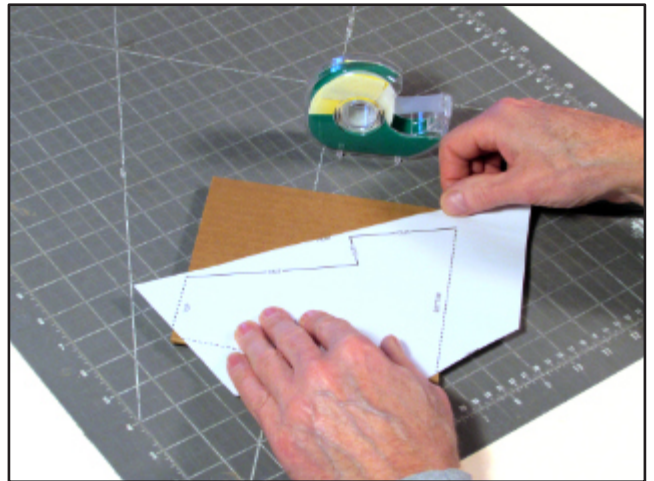
Metal Straightedge

Step 1: Fold cardboard in half along a single flute



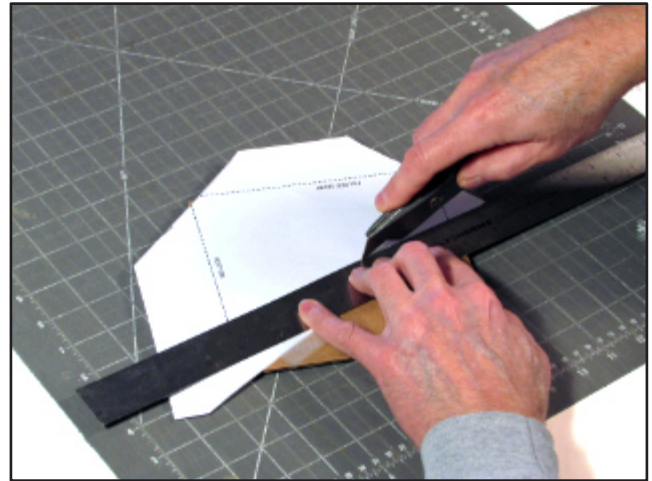
Step 2: Download, print and trim template

Step 3: Lay template on cardboard, aligning dotted lines to folded seam, top and bottom



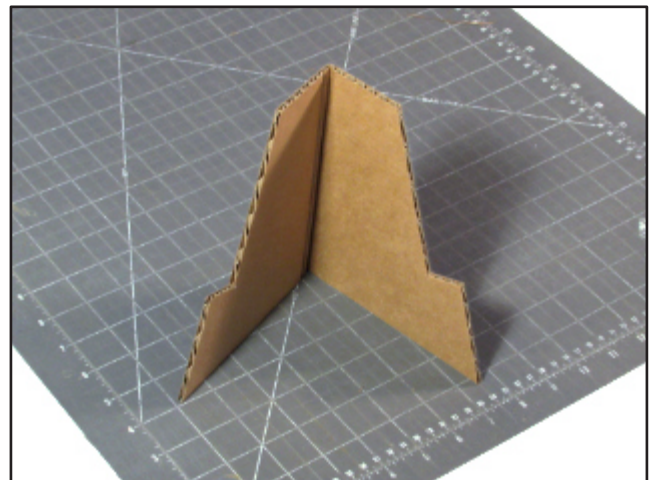
Step 4: Tape template in place

Step 5: Use a metal straightedge to guide utility knife blade



Step 6: Cut on solid lines through template and both layers of cardboard

Step 7: Open easel approximately 90° and stand on end.



Place spindle and cards on easel